

The Whisperer

WELCOME TO THE WHISPERER!

Hello and welcome back! In this addition we will be sharing what you need to be wearing in P.E., events that will be happening outside of school and much more. So go ahead and READ!!!



Edition 11

BE BRIGHT ★ REACH FOR THE STARS

PE kit coldness!!!

Unfortunately we are getting cold as it is winter. We need some more PE kit suitable for these conditions. You could give us these PE items: jogging bottoms, spare socks, trainers and hoodies.

Valentine's Day is coming! On the 19th of February it's Valentine's Day. This is a day to spend with your family and friends. Maybe this year you could write a Valentine's Day card for someone in your family.



F

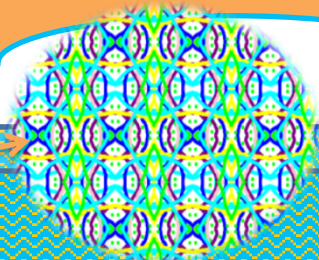
Message from Mrs Saville:

I am so proud of the Whisperer team for all of their hard work as a team to produce such a fabulous newsletter.

Happy New Year to everyone at Ashton Keynes Primary School and to everyone all over the world from the Whisperer team (Jemima, Rose, Charlotte, Darcey, Lucy, Tallulah, Jess and Poppy L). Everyone around the world celebrates NEW YEAR'S DAY every year and they all celebrate in their own ways. Happy New Year!



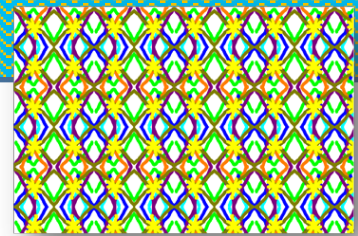
People normally have lemon on toast and pancakes. We eat pancakes on Shrove Tuesday to use up our goods and fats before lent.



Competition time!

Hello friends, here is a competition for all of you fans out there!

The Whisperer team wants you to make your own picture that will feature on the next newsletter as a wallpaper. Here are some examples to give you some ideas.



Netball
WHY DON'T YOU JOIN A LOCAL NETBALL TEAM, IT'S REALLY GOOD FOR YOUR HEALTH AND GREAT FUN!

Look at this cute creature. But remember, carrots are very good for you. So still eat them.



Tell us what you think about the Whisperer.

If you have any suggestions you can talk to Jemima in year 6 who will do her best to present the ideas to the team. We'd love to hear your suggestions.

From *The Whisperer team* 📧



500 words!

500 words is a BBC competition that anyone in the school can enter!

if you would like to enter all you have to do is write an original story. it can be about anything you like. maybe you would do a myth or a non-fiction [made up] however it must be 500 words or less.

the judges will be looking at not only the story but also punctuation and spelling.

Will you enter?

Look at this amazing wordle made by our team.

trust creativate creativate
persevere
thankful
sorry thewhisperer thewhisperer